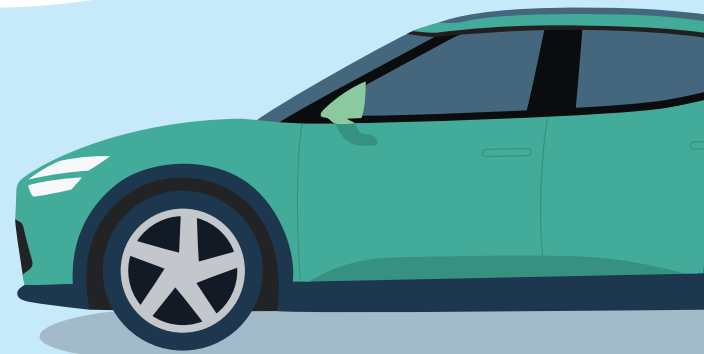


## ENDURANCE warranty features\*

- ✓ Begins when the Manufacturer's warranty expires
- ✓ Unlimited claims
- ✓ Unlimited kilometres
- ✓ Parts and labour cover  
– Australia-wide
- ✓ Accommodation allowance
- ✓ Car hire allowance
- ✓ Simple 'no forms' claims process
- ✓ Fully transferable



\* Benefits offered by this warranty are in addition to any warranties and guarantees relating to your vehicle under the Competition and Consumer Act 2010 (Australian Consumer Law) and State and Territory legislation. This brochure is provided as an overview only — for details please refer to the Warranty Terms and Conditions.

## About Integrity

As one of the oldest and most respected brands in the Motor Vehicle Warranty business, we are pleased to administer the “Endurance” product range on behalf of your Dealer.

Whether you're buying a new or pre-owned

car, the addition of an Endurance Motor Vehicle Warranty keeps you covered Australia-wide

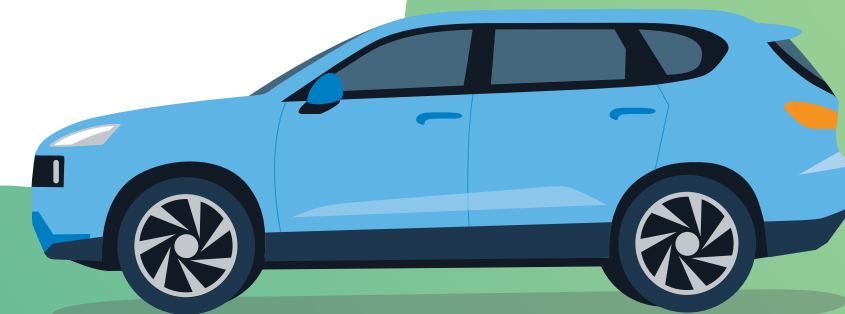
well after the dealer or Manufacturer's warranty runs out.

This Endurance Motor Vehicle Warranty is a unique product only available at time of Vehicle purchase.

[iwarranty.com.au](http://iwarranty.com.au)  
Extended Dealer Services Pty Ltd  
ABN 73 687 767 157

\* Endurance Motor Vehicle Warranty is issued by your Motor Dealer and is administered by Extended Dealer Services Pty Ltd

# ENDURANCE Motor Vehicle Warranty



# ENDURANCE

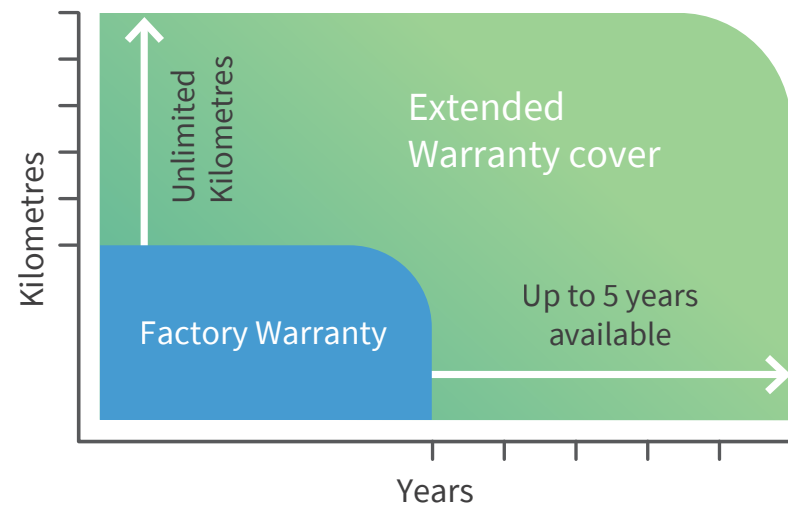
## Motor Vehicle Warranty

Purchasing an extended warranty for your vehicle is almost as important as purchasing the car itself.

Once the Manufacturer's warranty cover expires you are potentially exposed to significant costs of rectifying any mechanical or electrical breakdown.

As cars get older, components are more likely to fail and it won't be just the cost of replacing a part, there'll be the labour charge of fitting it as well – it all adds up.

The option of choosing an Extended Warranty may reduce the financial impact of unexpected repairs.



### Additional benefits

  
**Accommodation**  
 Receive \$150 per day up to the maximum claim limit towards the cost of accommodation in the event your vehicle breaks down\*

  
**Vehicle**  
 Up to \$100 per day up to the maximum claim limit towards the cost of car hire in the event your vehicle breaks down\*

| Product Level              | Option A   | Option B   |
|----------------------------|--|--|
| Warranty Period            |  |  |
| Qualification criteria     | Any vehicle regardless of age and distance travelled | For vehicles 20yrs and under that have travelled less than 280,000km |
| Covered components & parts |  |  |

|               |                         | Option A | Option B |
|---------------|-------------------------|----------|----------|
| Drive Train   | Engine                  | \$1,000  | \$2,000  |
|               | Differential            | \$1,000  | \$2,000  |
|               | Gearbox/Transmission    | \$1,000  | \$2,000  |
|               | Turbo/Super Charger     | \$1,000  | \$2,000  |
| Comprehensive | ABS Brake System        | \$350    | \$750    |
|               | Air Conditioning        | \$350    | \$750    |
|               | Brakes                  | \$350    | \$750    |
|               | Clutch                  | \$350    | \$750    |
|               | Cooling System          | \$350    | \$750    |
|               | Computers               | \$350    | \$750    |
|               | Cylinder Head & Gasket  | \$350    | \$750    |
|               | Driveshaft & Universals | \$350    | \$750    |
|               | Electrical              | \$350    | \$750    |
|               | Fuel System             | \$350    | \$750    |
|               | Ignition System         | \$350    | \$750    |
|               | Power Windows           | \$350    | \$750    |
|               | Radiator                | \$350    | \$750    |
|               | Steering                | \$350    | \$750    |
|               | Suspension              | \$350    | \$750    |
|               | Transmission Computer   | \$350    | \$750    |

### ENDURANCE warranty cover\*

- ✓ Service anywhere\*  
Enjoy the freedom to have your motor vehicle serviced at a licensed mechanic of your choice
- ✓ Repair anywhere\*  
With an extensive network of authorised repairers Australia-wide
- ✓ Authorised motor dealer\*  
Take advantage of securing an Endurance Motor Vehicle Warranty only available when purchasing your vehicle

\* Some exclusions apply, see Warranty Terms and Conditions for full details.